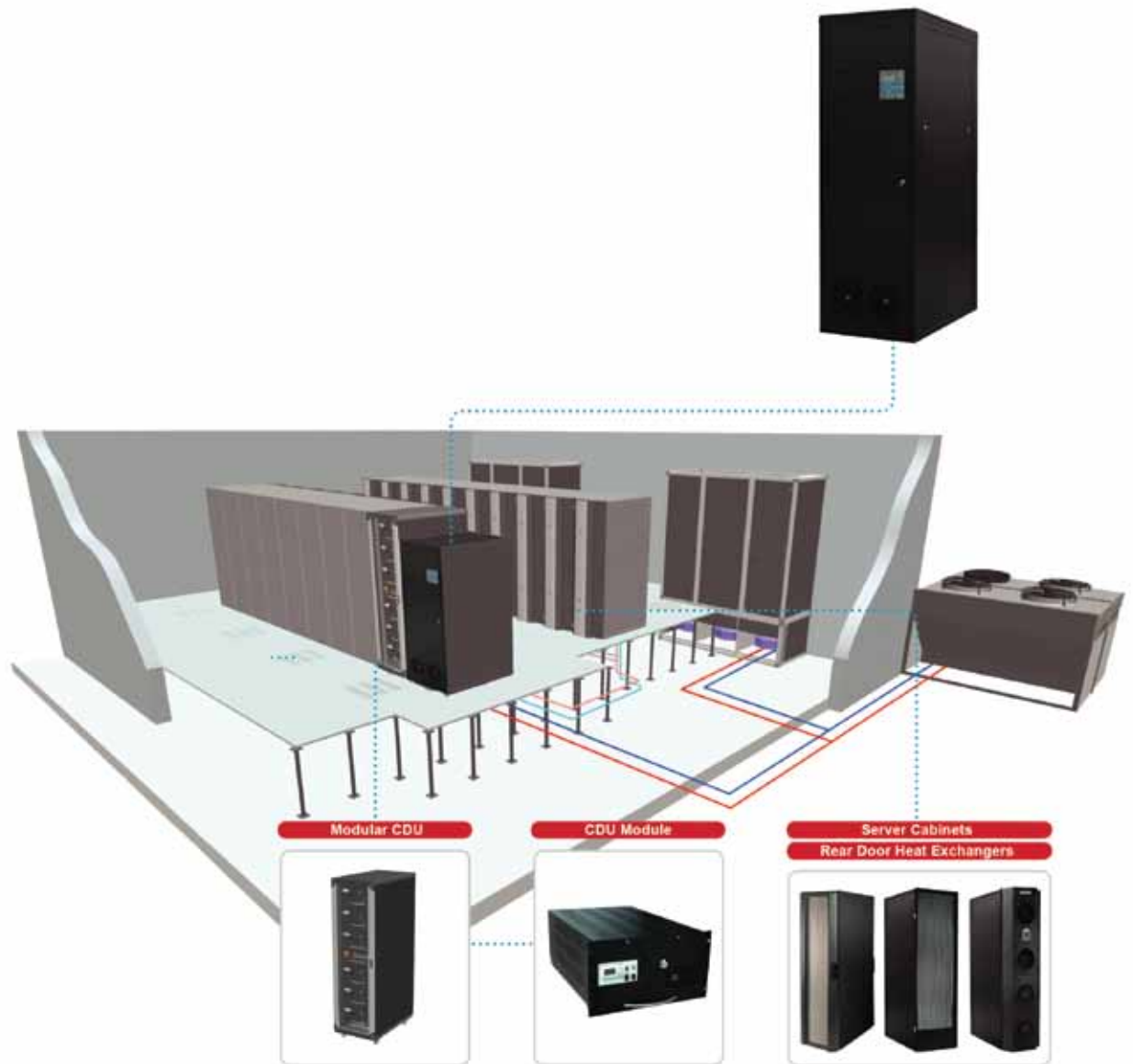


# DATA CENTRE COOLING



# IDEC



- Capacity 200kW, 300kW, 400kW
- End on, roof top and stacked configurations
- Highly efficient heat exchanger
- Low weight/compact footprint
- <math><1.1</math> pPUE



## Rear Door Cooling



- Passive and active models
- Cooling duties 5kW-50kW
- N+1 redundancy (active door)
- 42U and 47U cabinet compatible
- Compact, slim-line design



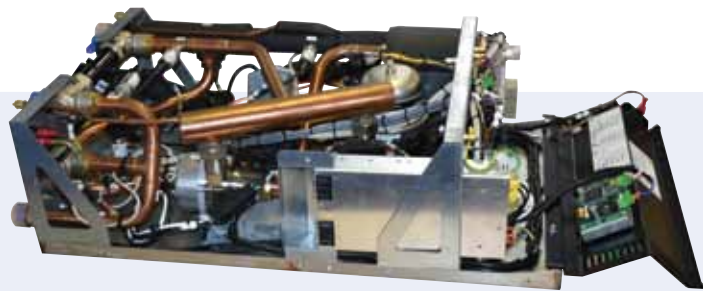
# CDU - Rear Door Cooling / Supercomputing



- Cooling capacity 305kW
  - Up to 18 rear door coolers
  - Supercomputer cooling
- 0.6m<sup>2</sup> footprint
- Full communications protocols
- Dew-point tracking & control
- Major component redundancy
- 4.5kW power consumption



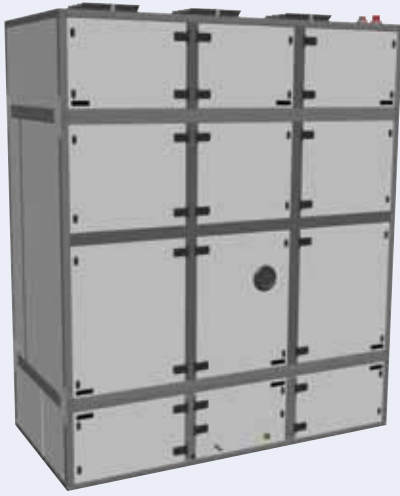
## CDU MODULE



- Cooling capacity 20kW
- Rack mounted (6U)
- Serves rear door coolers
- Dew-point tracking software
- Ideal for planned upgrade path



# CRAC and CRAH



## FlexAire®

- 10kW-60kW DX cooling
- Downflow configuration
- R410a
- High efficiency tandem compressors



## CTF

- Capacity 50kW-150kW
- Modular design
- Direct fresh air
- Adiabatic humidification and cooling
- Bespoke control system

## eBTX

- DX and fresh air cooling
- Packaged unit with integrated condenser
- Upflow and Downflow configuration
- Cooling capacity 15kW-45kW
- Highly efficient cooling



## DRU

- Capacity 80kW-120kW
- Downflow configuration
- Dual coil, DX/CHW
- Free cooling option

 **NORTEK**  
GLOBAL HVAC

Birrell Street, Fenton  
Stoke-on-Trent ST4 3ES  
Tel: +44 (0)1782 599995  
www.eaton-williams.com

 **Eaton-Williams®**  
a Nortek Global HVAC Brand











Eaton-Williams Group Limited and Nortek Global HVAC are both Nortek Inc., companies

The following are trademarks and registered brand names of Nortek inc., Cool3, Edenaire, EWS, Moducel, ServerCool, Vapac and Eaton-Williams.